



Pewaukee School District

COVID-19 Update

January 27, 2021

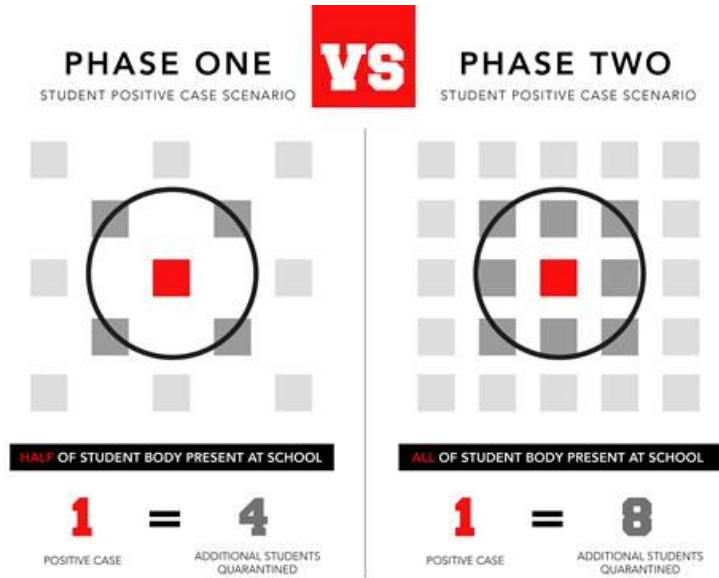
Weekly Update Data: This information is provided in an effort to be transparent with the level of COVID-19 virus activity within the school district. Please note that information relative to any individual's health is very sensitive and private so we are taking steps to secure the anonymity of individuals. Student numbers will be published at a school level and the district as a whole. In any school in which the number is <5 we will post an * to avoid the likelihood of exposing the identity of an individual. We will provide a summary number for the district as a whole. For staff, because they are fewer in number, we will only post that information for the district as a whole.

Data related to the spread of the virus in our region can be reviewed using the **Waukesha County COVID-19 Dashboard** at [Coronavirus](#) .

Phase Status: *Current level = Phase 3; Grades 4K - 5 (Full attendance Mon - Friday); Phase 2; Grades 6-12 (Full attendance MT,TH,F & All Virtual Wed)*

We are pleased to see a sustained trend of low rates of infection and quarantine in all of our schools. In addition, the spread in our census area, Waukesha County, and Wisconsin have stabilized at levels we haven't experienced since early September. This is great news and trends we hope continues as the roll out of the vaccine continues to ramp up. This week we moved 4K-5 students to Phase 3 (5 days full attendance). We remain in Phase 2 for the middle and high school until further notice as we acclimate to 4-days full attendance and actively monitor for any spikes in infection or quarantine before considering any additional changes.

Please be aware that **with our shift to full group attendance at PHS and ACMS our ability to maintain full social distancing with students is diminished**. It is reasonable to expect that we may see higher numbers of students placed in quarantine through contact tracing due to being **identified as close contacts** to infected individuals. The good news is we have experienced very low levels of transmission of the virus, even for close contacts, in the school environment. We believe **the effective use of other mitigation strategies (e.g. mask wearing, sanitation, contact tracing) have been very beneficial in limiting transmission**. The **graphic below** illustrates how more students in the building can lead to higher numbers of students being placed in quarantine as close contacts:



Please note that **with our move to full size attendance groups, it is critical that students, parents, and staff work together to double down on our mitigation efforts so that we can stay safe to stay open.** Please do your part by:

- Staying home/not sending students who have any viral symptoms
- Practicing social distancing to the best of our ability
- Thoroughly and frequently washing your hands or using hand sanitizer
- Cooperating with contact tracing protocols
- Wearing face coverings consistently and appropriately (see graphic below)





Support Resources: These atypical times have been shown to contribute to increases in mental health issues for students and adults as routines are disrupted and this can lead to feelings of isolation and helplessness. Our student services staff are a tremendous resource and are trained to help. Please do not hesitate to contact your child's school counselor if you have any concerns. We are here to help! You can access helpful resources at:

<https://sites.google.com/a/pewaukeeschools.org/community-resources-list/home>

Data Table Terms

Active Cases: This term refers to individuals with a confirmed COVID-19 diagnosis who are not considered recovered. This would apply to any individual who has not completed the required 10-day isolation period which must also include 24-hours symptom free.

Probable COVID-19: This term refers to individuals who are symptomatic and have a known exposure to someone who has been diagnosed with COVID-19. Probable COVID-19 cases are included in the active cases data in the table below.

Quarantine: This term refers to individuals who are placed in quarantine due to a known exposure to an individual confirmed to have COVID-19 or due to the presentation of symptoms consistent with the virus.

January 27, 2021		
School	Student Active Cases (Confirmed COVID-19 / Non-recovered & Probable COVID-19) (Last update / +/- Change)	Students Quarantined (Symptomatic of, or Exposed to, COVID-19 / 10-14-day Quarantine) (Last update / +/- Change)
PLE	*	9
Horizon	*	7
Asa Clark MS	*	19
PHS	*	5
Total	6 (4 / +2)	40 (19 / +21)
District (Staff data x district level only to protect privacy of individuals)	Staff Active Cases (Confirmed COVID-19 / Non-recovered & Probable COVID-19)	Staff Quarantined (Symptomatic of or Exposed to COVID-19 / 14-day Quarantine)
PSD	2 (1 / +1)	2 (1 / +1)
* Indicates less than 5 cases to protect the privacy of individuals infected or in quarantine		



(Note: The **table above** represents most current day's data, whereas the **graph below** shows weekly trends from each Friday to provide a historical comparison.

Weekly Summary

